



## COMPANY PROFILE

---

# QCD METHOD

## "QUALITY - COST - DELIVERY"



## CONTENT

ONE-STOP-SHOP FOR MACHINING	3
AMS TODAY	4
AMS MISSION	5
CORE CAPABILITIES	6
CNC MACHINING SERVICES	7
CNC MILLING MACHINING SERVICE	8
CNC TURNING MACHINING SERVICE	9
METAL FABRICATION SERVICE	10
FINISHING SERVICE	11
QUALITY CONTROL	12
AMS EQUIPMENT	14
WORLDWIDE CUSTOMERS	15

## ONE STOP-SHOP FOR MACHINING

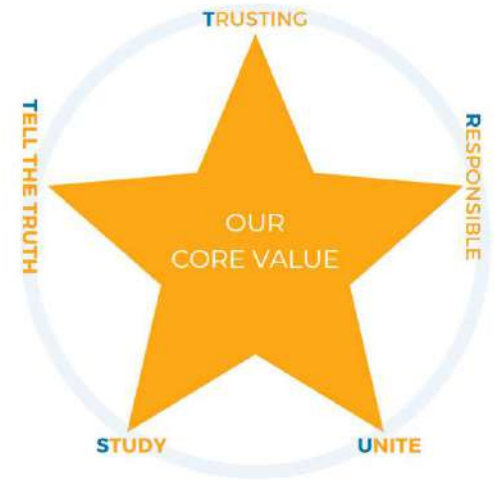
Established since 2015, starting with the business of importation and distribution of spare parts, tools, and industrial sub-materials to Vietnam market, AMS is now one of the top leading companies in Vietnam in machining service.

Our business motto is summarized by 5 alphabet letters:

T.R.U.S.T = Trusting + Responsible + Unite + Study + Tell the truth.

AMS is certified with ISO 9001:2015 . At AMS, 5S lean manufacturing method is strictly applied in daily works.

AMS is committed to enhancing the professional level of its staff and updating the latest technology to meet the needs of customers quickly and accurately.





# TODAY

Employees

# 30

Full Time

Revenue  
Annual

# 3

Million  
USD



LongTerm\$  
Debt:

# 0.00

Ownership: **PRIVATELY  
HELD**

Modern

# 2000

Ft \* 2 Facility

# 90%

Export  
overseas

# MISSION

Globally recognized for our technical and total value solutions. Exceed customer, employee, community expectations within a zero complaint culture.



## CUSTOMER

Offer globally competitive total value solutions by utilizing leading edge technology



## EMPLOYEE

Provide our employees with skills, career development, security, and competitive benefits.



## COMMUNITY

Viewed as a reputable, safe, and environmentally conscious enterprise.



# PARTNERS



# CORE MANUFACTURING CAPABILITIES

At Machining Prototyping, We are dedicated to make the world's best prototypes and precision parts for a wide range pf industries

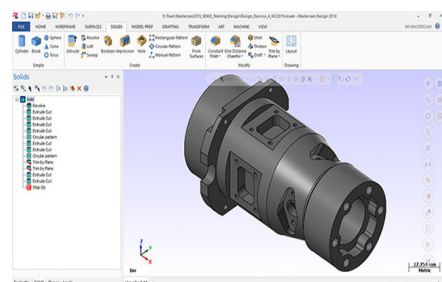
**CNC Machining**



**CNC Milling**



**CNC Turning**



**Quality Control**

**Rapid Design**

**Metal Fabrication**

## VALUE ADDED & DECORATIVE OPERATIONS

And we can do more !

- Outsourcing for investment casting
- Low volume manufacturing
- Quick turnaround production
- Post machining
- Anodizing
- Sanding And Polishing
- Blasting
- Pad Printing
- Screen Printing



# CNC MACHINING SERVICES

## Fast and Repeatable

Quick removal of large amounts of metal material, parts ready as fast as 1 day

## Scalable Volume

Scalable volumes for production of 1-100,000 parts.

## Accuracy

High-precision tolerances ranging from  $\pm 0.005"$  -  $0.01"$ , depending on customer specs.

## Custom Surface Finishes

Your parts just the same as real products.

## Wide Range of Materials

Over 50 metal and plastic materials.

## IN-HOUSING FACILITIES

• Milling machine	15
• Turning machine	15
• Swiss turning machine	30
• Wire cutting machine	1
• Grinding machine	1
• CMM	1
• VMM	1

## MATERIAL

### METAL

- Aluminum
- Bronze/Brass
- Copper
- Magnesium
- Stainless Steel
- Steel
- Titanium
- Zinc

### PLASTICS

- ABS
- Acrylic
- Delrin
- Fiberglass
- PEEK
- PVC
- Polycarbonate
- Polyethylene
- Polyurethane
- Teflon

## APPLICATION

- Jigs & Fixtures
- Rapid tooling
- R&D projects
- Post machining
- CNC prototyping
- End-use parts
- Turnkey mechanical solutions

# CNC MILLING SERVICES

Our CNC milling process allows the production of custom prototypes and end-use parts in as fast as one day. We use 3-axis milling and 4-axis indexed milling processes to manufacture parts from more than 50 engineering-grade plastics and metals.

Our CNC milling service is commonly used for:

- Functional prototypes
- Jigs and Fixtures
- Production in low volumes



# CNC TURNING SERVICE



Our precision turning process uses cutting edge CNC lathes with live tooling. This means features like axial and radial holes, flats, grooves, and slots can be machined with accuracy.

## **CNC turning is often used for:**

- Functional prototypes and end-use parts
- Parts with cylindrical features
- Parts with axial and radial holes, flats, grooves, and slots

## **PART SIZES AND TOLERANCES**

Small features may be allowed, but the diameter in any region should not be less than 0.030 inch. (0.76mm).

Sharp conical points are allowed; angles should be greater than 30 degrees. Walls thinner than 0.020 inch. (0.5mm) typically do not survive the machining process.



## **MATERIAL**

We stock a range of metal materials that are suitable for various part applications and industries.

- Aluminum
- Brass
- Low Carbon Steel
- Steel Alloy
- Stainless Steel
- Engineering plastics

## **SURFACE FINISH OPTIONS FOR TURNED PART**

Whether you require a mirror-like polish, micro-fine textures, or specific roughness measurements, we have the expertise to meet your unique requirements. With our advanced equipment and skilled craftsmen, we ensure that every turned part receives the utmost care and precision, resulting in a surface finish that not only enhances aesthetics but also guarantees optimal functionality.



# METAL FABRICATION

From concept to completion, we offer a comprehensive range of services including cutting, bending, welding, and finishing, all executed with precision and utmost attention to detail. Our state-of-the-art facilities are equipped with advanced machinery and technology, allowing us to handle projects of any size or complexity. Whether you require customized components, structural fabrication, or intricate designs, our team has the expertise and resources to bring your vision to life.



## MACHINING PROCESSES

- Cutting: Shearing, laser cutting, Waterjet cutting, plasma cutting
- Bending: Press brake, roll bending, hammering
- Forming: Stamping, deep drawing, spinning
- Joining: Welding, fastening, adhesive bonding



## MATERIAL

Our Metal Material Options

- Aluminum
- Brass
- Copper
- Stainless Steel
- Steel: CR Non-treated
- Steel: CR Galvanneal and CR Galvanized

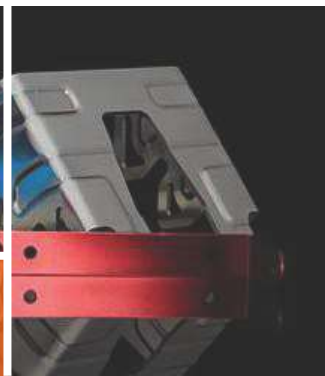


## METAL FINISHING OPTIONS

Finishing processes enhance the appearance, protection, and functionality of the sheet metal parts. Some common finishing techniques we work with:

- Grinding and Polishing
- Powder Coating
- Anodizing
- Plating: Chrome, zinc, nickel, etc.
- Passivation





# FINISHING SERVICE

## STANDARD

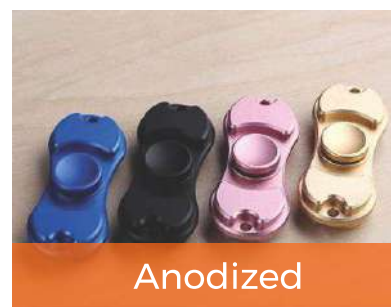
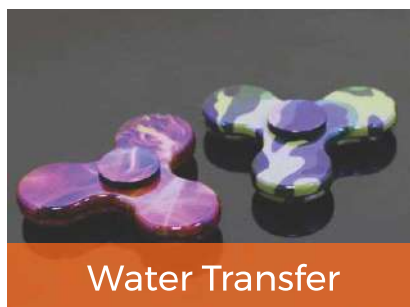
100% parts after machining are deburred.

## BEAD BLAST

The part surface is left with a smooth, matte appearance

## CUSTOM

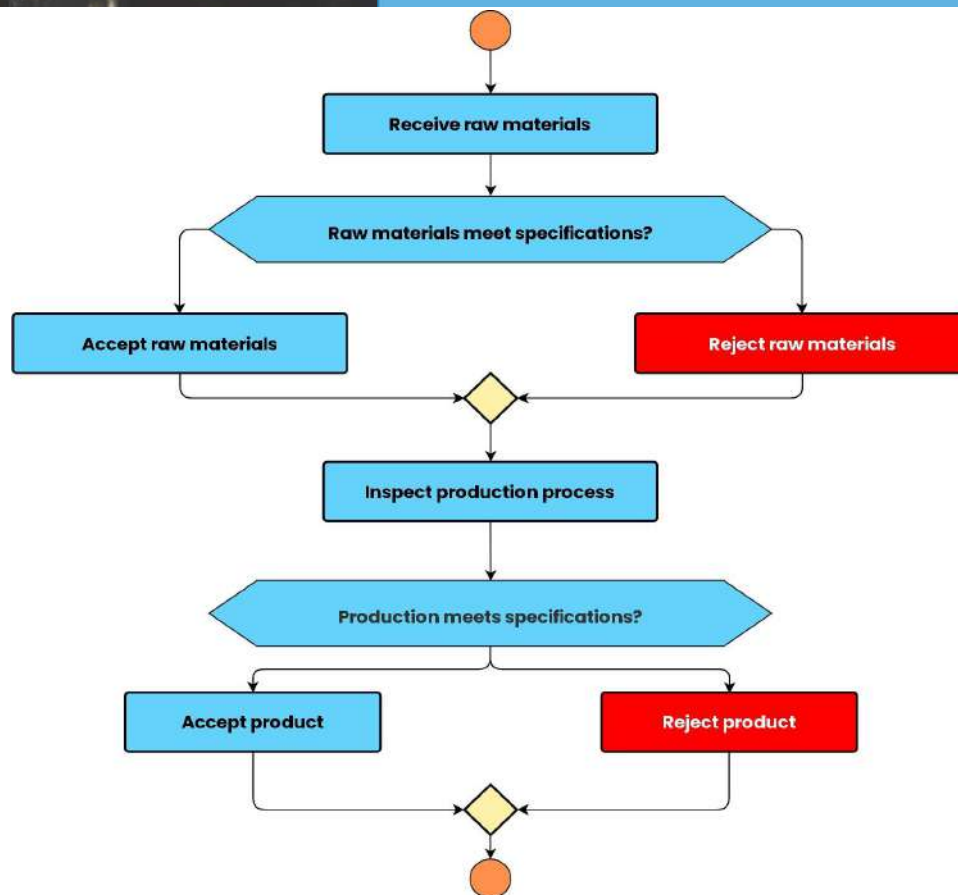
- Plating
- Coating
- Blasting
- Printing
- Anodizing
- Sanding & Polishing
- Pad Printing Screen
- Custom finishes are available





## QUALITY CONTROL

Quality control is a fundamental aspect of our operations. We prioritize delivering precision-engineered products that meet the highest standards of quality and performance. Our dedicated team of skilled professionals ensures that every step of the manufacturing process adheres to rigorous quality control measures. From the initial inspection of raw materials to the final product inspection, we employ advanced techniques and cutting-edge technology to guarantee the accuracy, dimensional integrity, and reliability of our machined components.



## Quality Control Processes At AMS

1. **Inspection on raw materials:** This involves checking the quality and quantity of the raw materials that are delivered to the manufacturing facility. Any discrepancies or defects must be reported and resolved before the raw materials are accepted for use in the production process.
2. **Acceptance of raw materials:** This involves verifying that the raw materials meet the required quality standards and are suitable for use in the production process. This step is critical, as it ensures that the final product will meet the required quality standards and that any issues with the raw materials are identified and resolved before production begins.
3. **Inspection on production process:** This involves monitoring the production process to ensure that it is being carried out according to the required standards and specifications. Any deviations or issues must be identified and resolved as soon as possible to prevent any impact on the final product's quality.
4. **Acceptance of the product:** This involves checking the final product to ensure that it meets the required quality standards and specifications. This is the final step in the quality control process, and it is critical to ensure that the product is of the required quality and that any issues are identified and resolved before the product is shipped to customers.

## PART DIMENSIONS MEASURED

- Straightness
- Flatness
- Circularity
- Cylindricity
- Profile of a Line
- Profile of a Surface
- Position
- Concentricity
- Parallelism
- Perpendicularity
- Angularity



## ADDITIONAL QUALITY CAPABILITIES

### Production Part Approval Process (PPAP)

PPAP is a quality inspection process typically used in the automotive industry. The method is used to verify that a production process can reliably produce a quality part repeatedly. There are 18 components to a PPAP inspection that range from customer approval to sample part production.



## Some AMS'S EQUIPMENT

### CNC Milling Machines

No.	MACHINE TYPE	MODEL	Status	MAKER	WORK AREA SIZE (mm)
1	Vertical	Brother S1000X1	Good	Brother	1,100 x 500
2	Vertical	Brother S500X1	Good	Brother	600 x 400
3	Vertical	Brother TC-S2A	Good	Brother	600 x 300
4	Vertical	Hyundai wia I-CUT 380TDI	Good	Hyundai	650 x 400
5	Vertical	Fanuc Robodril T21iD	Good	FANUC	650 x 400
6	Vertical	Fanuc Robodril D21LiA	Good	FANUC	850x410
7	Vertical	Mori Seiki Frontier M1	Good	DMG Mori	600 x 410

### CNC Turning Machines

No.	MACHINE TYPE	MODEL	Status	MAKER	MAX DIA. TURNING (mm)
1	Horizontal 3 axis	Takisawa TC-200	Good	Takisawa	D220
2	Horizontal 3 axis	Okuma GENOS L250II-E	Good	Okuma	D290
3	Horizontal 3 axis	Okuma LB25 II-M	Good	Okuma	D550
4	Horizontal 3 axis	Okuma LCS-15E	Good	Okuma	D260
5	Horizontal 3 axis	TAKISAWA TCN-2100 L6	Good	Takisawa	D410
6	Horizontal 3 axis	Myano ZM-542	Good	Citizen	D542

### Swiss Turning Machines

No.	MACHINE TYPE	MODEL	Status	MAKER	MAX DIA. TURNING (MM)
1	Swiss Turning	Cincom FL25	Good	CITIZEN	25mm
2	Swiss Turning	Cincom BL12	Good	CITIZEN	12mm
3	Swiss Turning	Star SE16	Good	STAR	16mm
4	Swiss Turning	Star SE12	Good	STAR	12mm

### Wire Cut EDM Machine: 1

No.	MODEL	Status	ACCURACY (mm)	Ra (μm)
1	ST4050F-M	Good	≤ 0.009	≤ 1.0

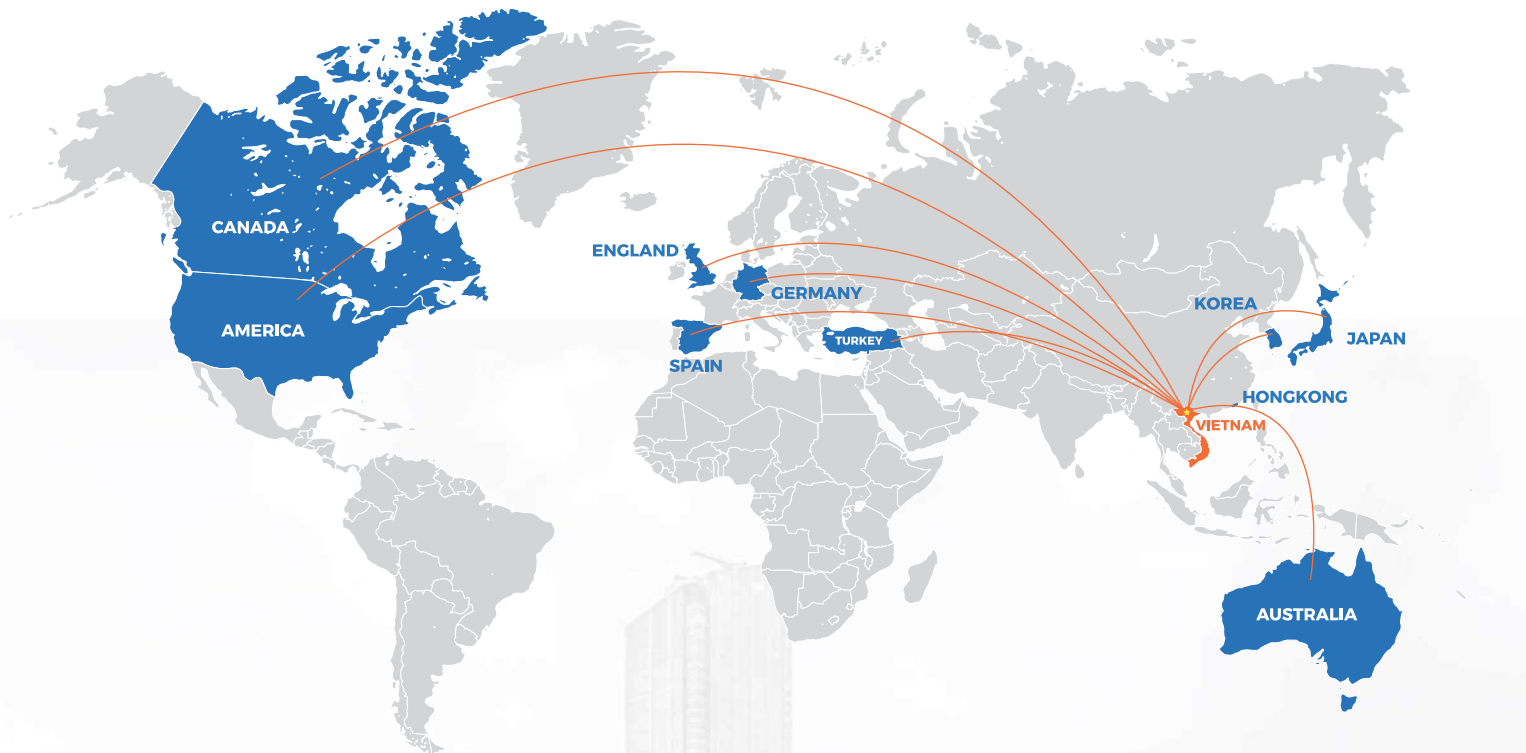
### Grinding machine: 1

No.	MODEL	Status	WORK TABLE SIZE (mm)
1	Hitachi	Good	950 x 450

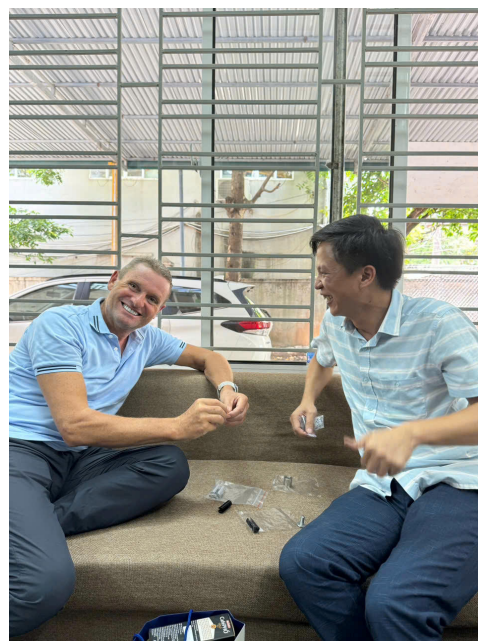
### Quality Control Equipment & Tools:

No.	DESCRIPTION	Status
1	CMM	Good
2	VMM	Good

# WORLDWIDE CUSTOMERS



EUROPAN	AMERICA	ASIA	DOMESTIC
GERMANY	USA	JAPAN	FDI
SPAIN	CANADA	KOREA	THACO
TURKEY	AUSTRALIA	HONGKONG	VIETTEL
ENGLAND			



### Head Office/ Trụ sở

📍 No.4 Lot 8, Lai Xa Industrial Clusters, Kim Chung Wards, Hoai Duc Districts, Ha Noi, Viet Nam

### Factory / Nhà Máy

📍 No.04 Lot 8, Lai Xa Industrial Clusters, Kim Chung Wards, Hoai Duc Districts, Ha Noi, Viet Nam

☎ +84 96 306 65 12

🌐 [www.amsviet.com](http://www.amsviet.com)

✉ [contact@amsviet.com](mailto:contact@amsviet.com)

☎ +84 96 306 65 12